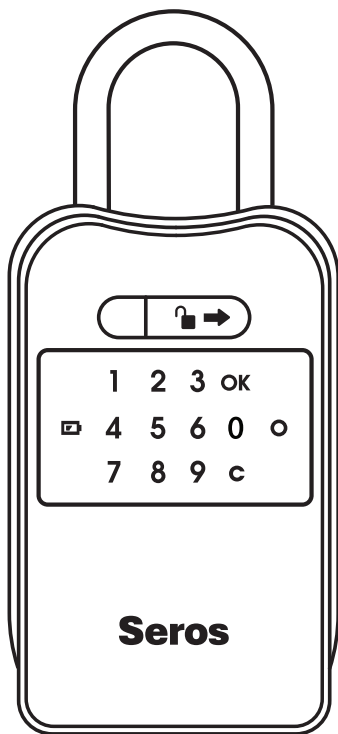




Setup Guide

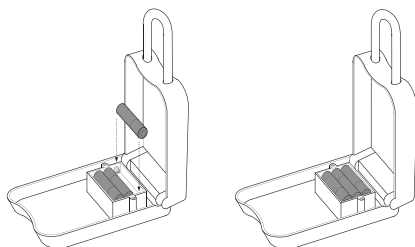


Insert Batteries

Insert 3 fresh AA alkaline batteries to power your Seros Box.



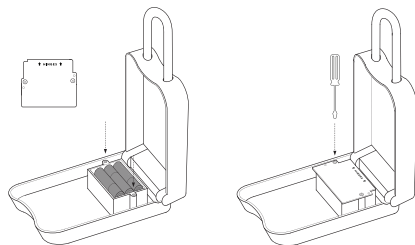
SerosAccess devices are designed specifically for AA alkaline batteries. Please avoid using lithium-ion batteries, rechargeable batteries, or any other battery type.



Place the battery cover in the orientation shown below. Secure the captive screws with the included screwdriver.



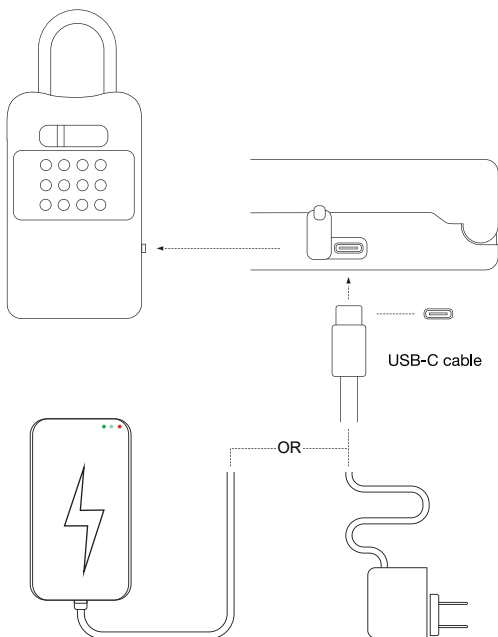
To ensure optimal waterproofing, securely tighten the screws on the battery compartment.



Emergency Power Supply

If your SerosBox has arrived closed and you cannot access the battery compartment -- our apologies. Use a USB-C cable to power it up.

In the event of a super low battery alarm (page 8), use a USB-C cable to power it up.



Download App

1. Download the mobile app:



ShowMojo app: If you are a ShowMojo customer.



SerosAccess app: For everyone else, SerosBoxes can be used for free and with no monthly fee only from the SerosAccess app.

2. In the mobile app:



If you're using the ShowMojo app, login with your existing credentials.



If you're using the SerosAccess app, create a free account or sign in if you already have an account.

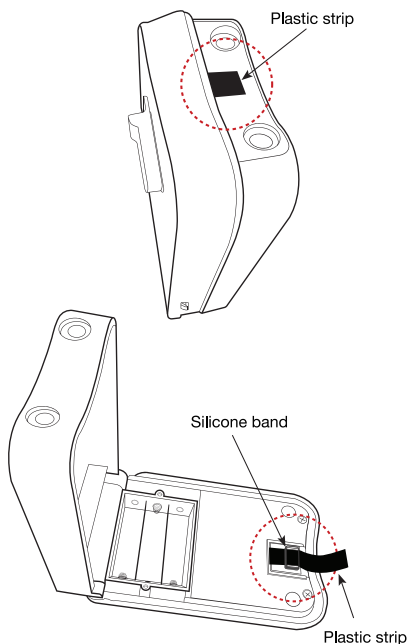
3. Press any button on the SerosBox to activate bluetooth.

4. Follow the Add Device steps in the app.

5. Find the SerosBox by serial number or assigned listing from the Digital Access List.

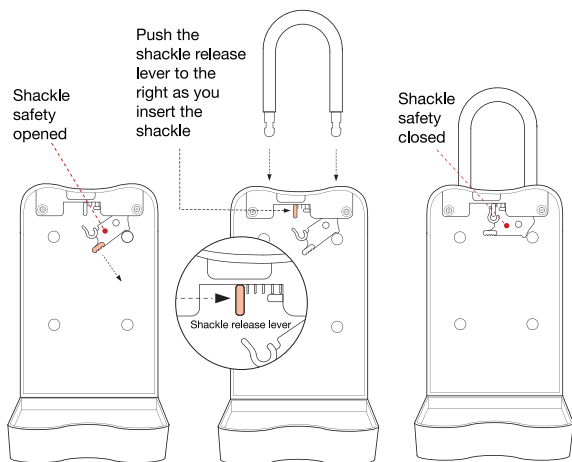
Remove Packing Materials

Remove and discard the black silicone band and plastic strip from the SerosBox after the batteries are installed.



Insert Shackle

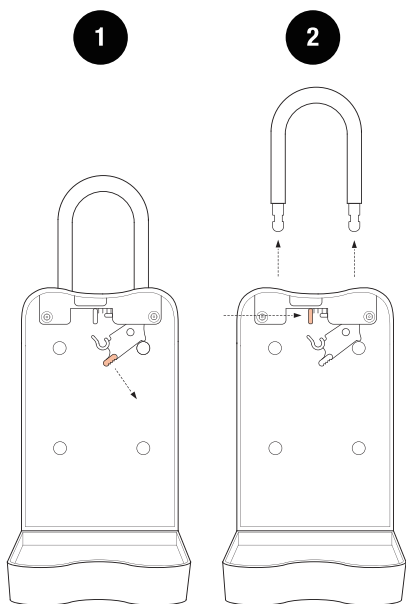
Insert the shackle to hang your SerosBox on a doorknob, or any other secure location. Ensure the shackle safety is in the closed position as shown to keep the shackle locked in place.



There will be some resistance while inserting the shackle due to the shackle weather seals. Gently pull on the SerosBox against the shackle to ensure it is fully secured on both legs.

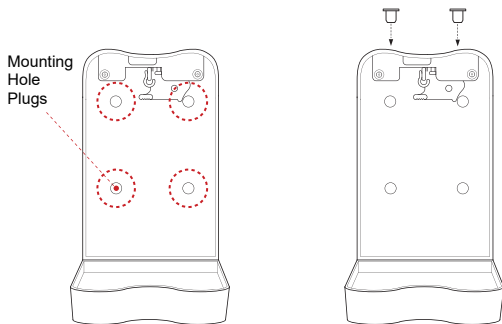
Remove Shackle

1. Rotate the shackle safety release downward.
2. Push the shackle release lever to the right and pull the shackle out of the SerosBox while pressing on the shackle release lever.



Wall Mounting (Optional)

1. Open the SerosBox key compartment.
2. Pry the 4 rubber mounting hole plugs out from the front face of the key compartment.
3. Use 4 (#8 or #10) wood screws with a min 1" length, to attach the box to the wall surface (coarse threaded drywall screws can also be used). Be sure to mark hole centers with a pencil and drill the appropriate sized pilot holes first. If mounting to brick or concrete, use 3/16" x 1-1/4" masonry screws. Mark and drill pilot holes using a 5/32" masonry drillbit.
4. Push the 2 shackle hole plugs into the top holes where the shackle would typically go. This is to prevent any water intrusion into the key compartment. These can be removed by pushing the screwdriver upward from the inside of the key compartment.



Low Battery Alarm

Low voltage alarm:

If after unlocking the SerosBox you hear a long beep for four seconds and the circle on the right side flashes red, this is an indication of low battery voltage. When this occurs, you should replace the AA alkaline batteries with fresh ones.

Super low voltage alarm:

If unlocking the SerosBox fails, and you hear two short beeps followed by a long beep that lasts for four seconds and the circle on the right side flashes red, this is an indication of super low battery voltage. When this occurs, please refer to page 3 for instructions on using the Emergency Power Supply.

SerosBox Support

<https://serosaccess.com/support>

